

RENOVATOR'S NOTEBOOK

MODERN LOVE

Once stuck in the 1960s, this cottage is now a spacious art-filled home with a sense of fun, writes Judy Barouch.

There's a sense of fun in the North Shore Sydney home that Karen and Alastair Pearson share with their children, Ella, Hamish and Camille. The joyous atmosphere can be credited, in part, to a serious renovation of the 1930s bungalow they bought in April 2010. "Beyond the 1960s alterations we could see the house had great bones, with large rooms and high decorative plastic ceilings," says Karen.

After living in cramped quarters for a few months, the couple briefed architect Clare Carter, requesting an open-plan kitchen/dining/living area that wasn't simply a glass box. They also wanted each child to have their own bedroom in an upstairs addition.

Clare accomplished all this and more. "The front, enclosed verandah was opened up and doors added to lead into the former main bedroom, which became a study," she says. "Across the hall, Ella's bedroom became the main bedroom, with a walk-in wardrobe created from Hamish's adjacent room. The old bathroom became an ensuite."

The rear of the house was demolished to make way for a guest bathroom, laundry, living/dining/kitchen area and a stairwell. Being in a conservation zone, upstairs rooms were built into the roof space.

The couple's art collection was a starting point for both Clare and interior designer Jacinta Preston, whom Karen says "pushed our boundaries in terms of feature lighting, joinery, rugs and furniture."

"We love the way the old part of the house now transitions seamlessly to the new with its simple, square skirtings and architraves, generous window seats and glass bifolds framed in timber. It's a contemporised version of a classic cottage." >



Photography by Scott Hawkins.

AT A GLANCE

Who lives here Alastair and Karen Pearson and their children Ella, 12; Camille, nine; Hamish, seven and Luna the Maltese poodle.

Time line Planning began in June 2010 with a DA submitted in February 2011 and approved in April 2011. Construction took from August 2011 to June 2012.

Architect Clare Carter of Contemporary Architecture; (02) 9438 4200 or www.contemporary.net.au.

Builder GKP; (02) 9986 2269 or www.gkpbuilders.com.au.

Interior designer Jacinta Preston; (02) 9410 1154 or www.jacintapreston.com.

Size of home pre renovation 167m²

Size of home post renovation 274m²



The Pearson children, Hamish, Ella and Camille regularly congregate in the kitchen. "Incorporating a computer area was important", says Karen. Tom Dixon Copper Shades from Dedecor. Throw, Little Dandelion. Painting by Kudjitji Kngwarreye. For Where to Buy, see page 236.



< LIVING ROOM

A purple B&B Italia chair from Space makes a splash against the dove grey Jordan sofa and the Whitecliffe Imports rug. *Queens Park* by Brendan Lakin.

ENSUITE

Moroccan floor tiles from Onsite Supply+Design and a Verner Panton pendant from Great Dane Furniture are attention grabbing. "But the feature I love is the heated pad behind the mirror that prevents steam build up," says Alastair.

DINING AREA

A white table from Homeware Gallery is paired with walnut dining chairs from Great Dane Furniture, and all diners enjoy a view of the garden. "It was crucial that there be sightlines to the pool," says Karen.

MAIN BEDROOM

"We wanted a relaxed feel, injected with some glamour," says Karen. Table lamps, from Space, and spotty gold cushions are a bit 'nightclub'. After *Mungo* artwork by Darren Gannon.

REAR EXTERIOR

Due to conservation zoning, the upstairs rooms had to be built into the roofspace with flat-roofed dormer windows. The colour palette includes walls in Mud Pack with trims in Monument and accents in Vivid White (all Dulux).

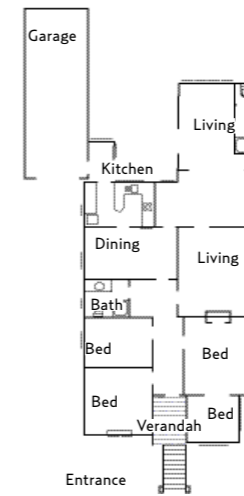


H&G Quick Quote

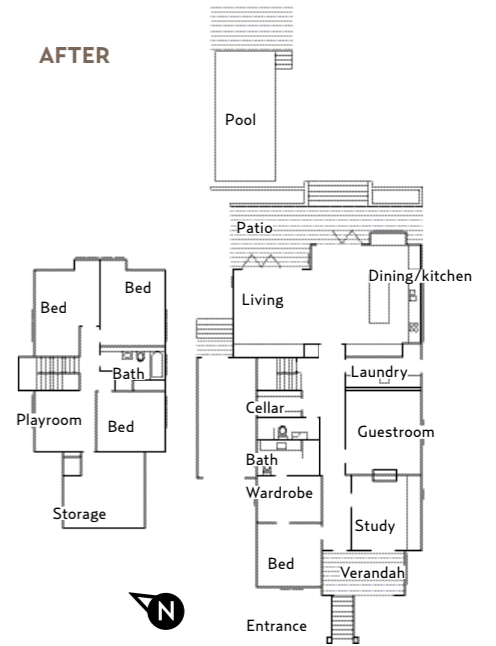
Need some work done at your home? Visit www.hgquickquote.com.au, phone 1300 733 470 or search 'QuickQuote' in app stores.

For Where to Buy, see page 236.

BEFORE



AFTER



'WE LOVE THE WAY THE OLD PART OF THE HOUSE NOW TRANSITIONS SEAMLESSLY TO THE NEW WITH ITS SIMPLE SKIRTINGS AND ARCHITRAVES, WINDOW SEATS AND GLASS BIFOLDS...' KAREN

KAREN AND ALASTAIR'S RENOVATION TIPS

- ❖ Use your budget to get the best space you can by focusing on the shell. Furniture can be added afterwards but it's hard at a late stage to add an extra metre that will transform a single bedroom into a double.
- ❖ Keep on top of 'action items' and decisions you need to make following site meetings. This means you won't hold up the build.
- ❖ Don't be afraid to ask questions while the build is taking place.
- ❖ Spend money on good-quality high-use items such as door handles and taps: the things you will be touching daily.
- ❖ Once your plans have achieved a workable space, have fun and be bold with accessories and finishes so the finished house reflects your personality.
- ❖ Consider the outdoor living space in relation to your kitchen/living area; to get the most benefit, you need easy access. #

THE BUDGET

Consultants	\$8,500	Doors & windows	\$60,100
Architect	\$52,000	Roofing	\$32,200
Council fees	\$3,500	Plastering	\$17,000
Demolition/excavation	\$20,000	Tiling & bench tops	\$20,400
Concrete/piling	\$35,000	Painting	\$30,000
Masonry	\$32,000	Hydraulics	\$56,300
Structural steel	\$10,200	Electrical	\$40,000
Carpentry	\$55,000	External works	\$19,100
Flooring, decking & stair timber	\$24,000	Pool & pool excavation	\$65,200
Joinery	\$50,000	Airconditioning/central heating	\$17,100
		TOTAL	\$647,600